

# Wollaton West

## Area Committee Executive Summary

Unofficial December 2012 Data

# Ward priorities – Progress update

THEME	PRIORITY	KEY ACTIONS
<b>SAFER</b>	<ul style="list-style-type: none"> <li>• Reduce commuting traffic along Russell Avenue and Cambridge Road</li> <li>• More Neighbourhood Policing patrolling the Ward to deter criminal activity.</li> </ul>	<ul style="list-style-type: none"> <li>• Councillors/Traffic Management are working to elevate the problem</li> <li>• PCSO's and CPO's routinely out on patrol.</li> <li>• Incidents of ASB not attended by NPT are followed up by PCSO's when back on duty.</li> <li>• Neighbourhood Policing Priority</li> </ul>
<b>NEIGHBOURHOODS</b>	<p>Improve the environment – parking issues are a major concern across the area – Harrow Road outside Middleton Primary School</p> <p>Improve local area – pruning of hedges and trees in open spaces and parks.</p>	<ul style="list-style-type: none"> <li>• Traffic Management/Enforcement/Councillors/Locality Management launched the 'Keep Me Safe' campaign on 4<sup>th</sup> October 2012.</li> <li>• All grass verges in the area are cut on a 2 – 3 week cycle from April – October dependant on the weather and plant availability.</li> <li>• Other pruning i.e. shrubs on parks and on the estates and also on the garden assistance programme are carried out between October and November</li> </ul>
<b>FAMILIES</b>	<ul style="list-style-type: none"> <li>• Reduce antisocial behaviour drug taking – Martins Pond and alleyways.</li> <li>• More activities for young people at local venues.</li> <li>• Youth Activities advertised widely in the area.</li> </ul>	<ul style="list-style-type: none"> <li>• Drug related activity followed up by NPT. Martins Pond regularly checked by the NPT.</li> <li>• Play and youth workers detached work around Wollaton Vale community centre and railway bridge, additional youth sessions at Wollaton Vale Community Centre and Harrow Road Community Centre are in place.</li> <li>• Timetables produced term time and distributed by Wollaton Children Centre</li> </ul>
<b>HEALTH</b>	<ul style="list-style-type: none"> <li>• More targeted support for the elderly, the area has high levels of pensionable households 40%</li> </ul>	<ul style="list-style-type: none"> <li>• Organise events and health drop-ins at community venues with health partners.</li> <li>• Recruit Change Maker volunteers who will help raise awareness of health issues in the community</li> <li>• Promote Decade of Better health activities</li> <li>• Setup/Promote healthy living walks in parks</li> </ul>
<b>WORKING</b>	<ul style="list-style-type: none"> <li>• More Jobs, Training opportunities advertised widely in the area, especially for youth.</li> </ul>	<p>Work with Economic Development/Wollaton Community Centre/Wollaton Library etc to ensure that training and employment opportunities are advertised.</p> <p>NDO's/ Councillors to support groups and agencies</p> <p>Signpost to groups and agencies and send job and training opportunities information to all community groups and associations</p> <p>Attend Worklessness Working Group and link with other foras.</p>

# Community Engagement

## Ward Walks

Area/Estate	Date/Time	Meeting Point
Arleston Drive	30 <sup>th</sup> January 2013	Outside Co-op, Arleston Drive
Tranby Gardens Area	6 <sup>th</sup> March 2013	Corner of Tranby Gardens & Wollaton Road

## Community Meetings

Group	Date	Venue
Wollaton West Local Area Group Meeting	22 <sup>nd</sup> January 2013 – 5:30pm	Wollaton Library, Bramcote Lane
Wollaton East Local Area Group Meeting	31 <sup>st</sup> January 2013 – 7:00pm	Kingswood Methodist Church , Lambourne Drive, Wollaton
Wollaton Park Community Residents Meeting	20 <sup>th</sup> February 2013 – 7:30pm	Wollaton Park Community Centre, Harrow Road, Wollaton
Wollaton Park Community Association General Meeting	6 <sup>th</sup> February 2013 – 6:30pm	Wollaton Park Community Centre, Harrow Road, Wollaton

# Community Engagement

## Events Delivered

Event	Lead Partners	Date/Time	Venue
Rushford Drive Park Community Orchard Planting	Fliss Hogg, Parks Development Officer/Jo Tarrant, Allotments Officer/Residents/Wollaton West Councillors	12 <sup>th</sup> January 2013	Rushford Drive Park

## Future Events and Activities Planned

Event	Lead Partners	Date/Time	Venue
Budget Consultation	Lylse-Anne Renwick, Neighbourhood Development Officer/John Marsh, Locality Manager	22 <sup>nd</sup> January 2013	Wollaton Library, Bramcote Lane
Wollaton West Grangewood Estate Days of Action	Lylse-Anne Renwick, Neighbourhood Development Officer/John Marsh, Locality Manager	23 <sup>rd</sup> January – 25 <sup>th</sup> January 2013	Grangewood Estate, Wollaton

# Finance

## **Ward Councillor Budgets**

Total Amount allocated this period £15,000

Budget Remaining Unallocated £21.526

## **Area Capital Fund**

Total Amount allocated this period £0

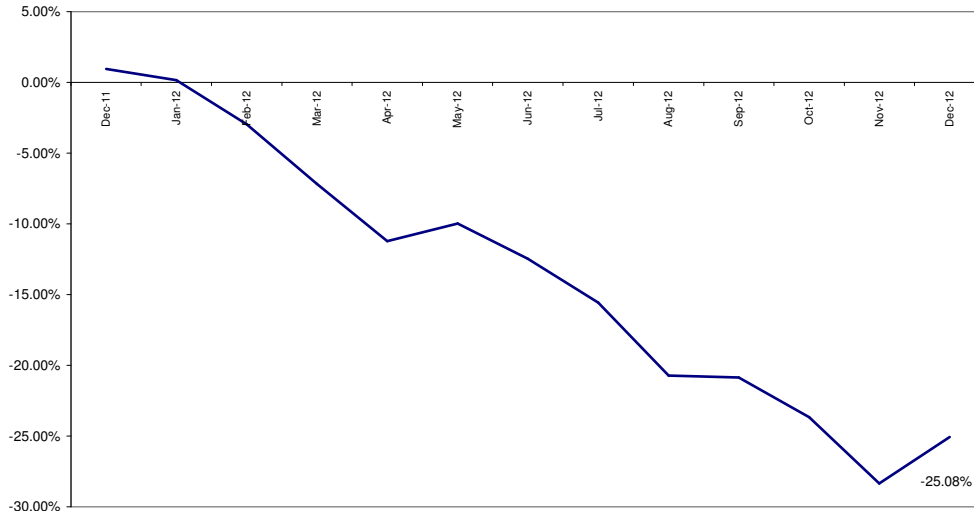
Budget Remaining Unallocated £8,038 (inc of 2012-13 allocation)

## **Others – Section 106, NCH Environmentals, Other Funding**

None this period

# Crime

All Crime in Wollaton West -  
% Change over 2010/11 Baseline (Rolling 12 Month)



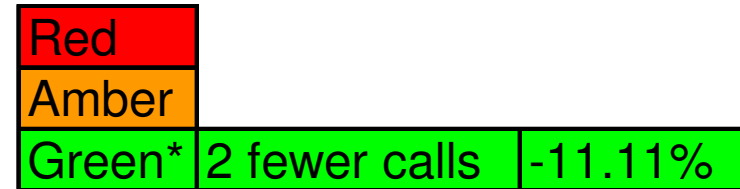
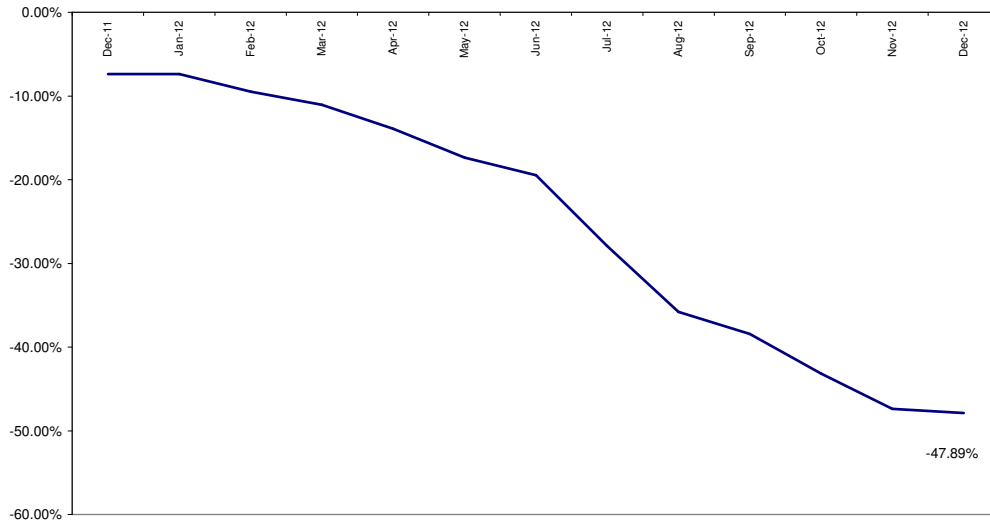
Red*	21 more crimes	+70%
Amber		
Green		

\*Refers to December 2012 compared to December 2011

- In December 2012 (compared to December 2011) All Crime in Wollaton West was significantly higher (70% increase, 21 more crimes, see above right RAG rating). However; it should be noted that these are still relatively low crime numbers and December 2011 had an unusually low level of crime.
- The above graph compares crime volume over the previous 12 months to a long term 2010/11 baseline. The recent performance of Wollaton West is better than the baseline but is down slightly compared to last month.
- Year to date (compared to the corresponding period last year) crime is down by 23.92%.

# All ASB

All ASB in Wollaton West -  
% Change over 2010/11 Baseline (Rolling 12 Months)

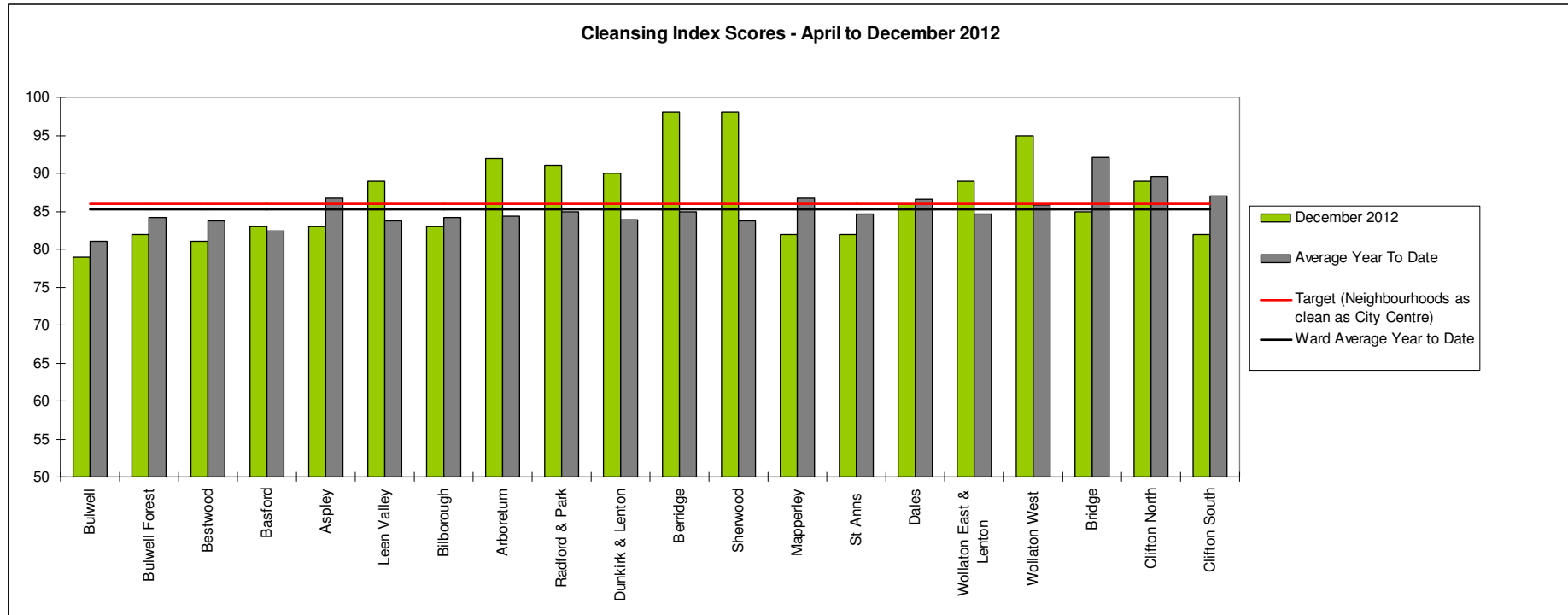


\*Refers to December 2012 compared to December 2011

- In December 2012 (compared to December 2011) All ASB was down by 11.11% (2 calls, see above right RAG rating).
- The above graph compares volume of All ASB over the previous 12 months to a 2010/11 baseline. The graph emphasises the steady decline in All ASB against this measure.
- Year to date (compared to the corresponding period last year) All ASB is down by over half (50.18%).

# Cleanliness Index

This graph shows the position of your ward compared to other Wards



**The “neighbourhood as clean as the city centre” benchmark target on cleanliness is to achieve a score of 86% in every ward. The 86% target is shown in red in the above graph.**

To calculate the Cleanliness Index (CI) an agreed number of transects are surveyed across an area covering a range of land types. Each site surveyed is awarded a cleanliness grade based on a 7 point scale from A to D where Grade A: – no litter, and Grade D: - heavily littered. The maximum possible score of 100 is achieved when all sites achieve Grade A.

The Code of Practice for Litter and Refuse (COPLAR) requires councils to strive to reach an ‘acceptable’ standard of cleanliness (grade B or better) across the Council area. Grade A is the ultimate goal and is how a site should be immediately after sweeping but is almost impossible to maintain for any length of time. For example, a grade A site is completely free of litter – one cigarette butt takes it down to B+.

To achieve the manifesto commitment of Neighbourhoods as clean as the City Centre a target of 86 is required as that was the CI for the City Centre in May 2011. To give some context if all areas surveyed achieved a grade ‘B’ standard, this would equate to a cleanliness index of 67.

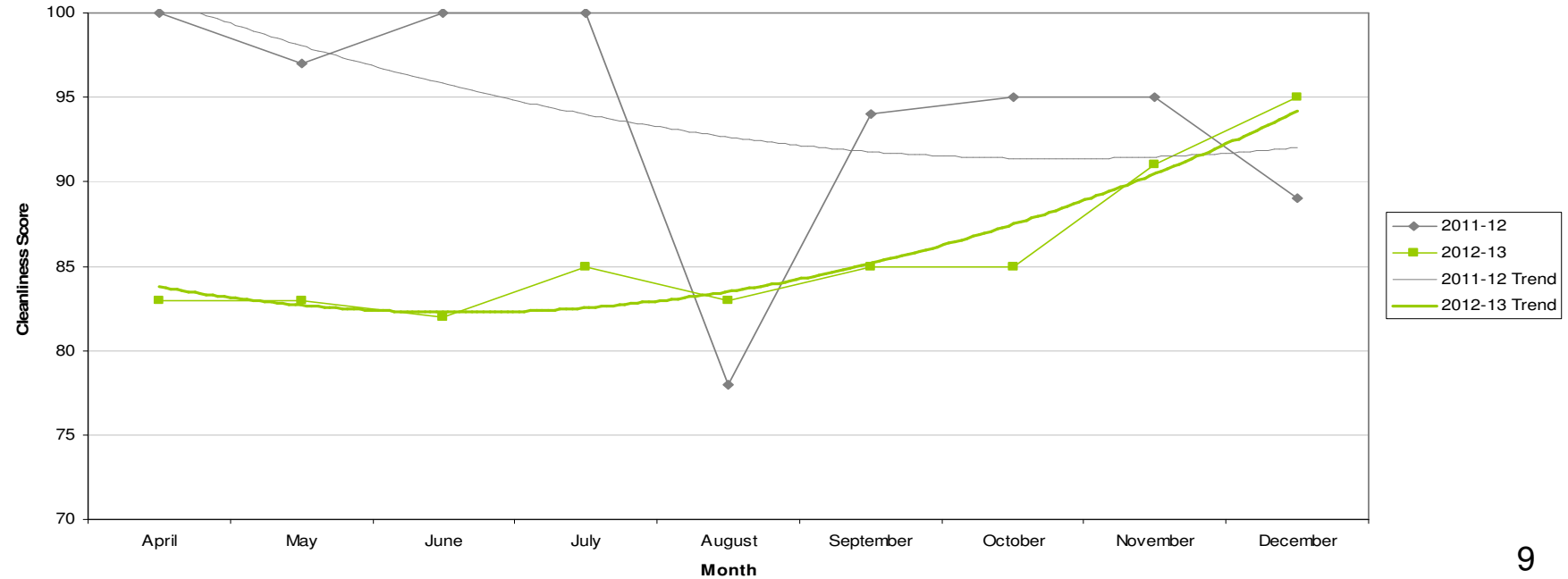


# Cleanliness Index

Cleanliness Index Score	<b>95</b>
Performance compared to previous year	↗
Performance compared to neighbourhoods target of 86	↗

- All data refers to a comparison with the previous year's month
- It is proposed that performance over time graphs be used for each indicator
- Historic data for comparison is not available for dog fouling

Cleanliness Index

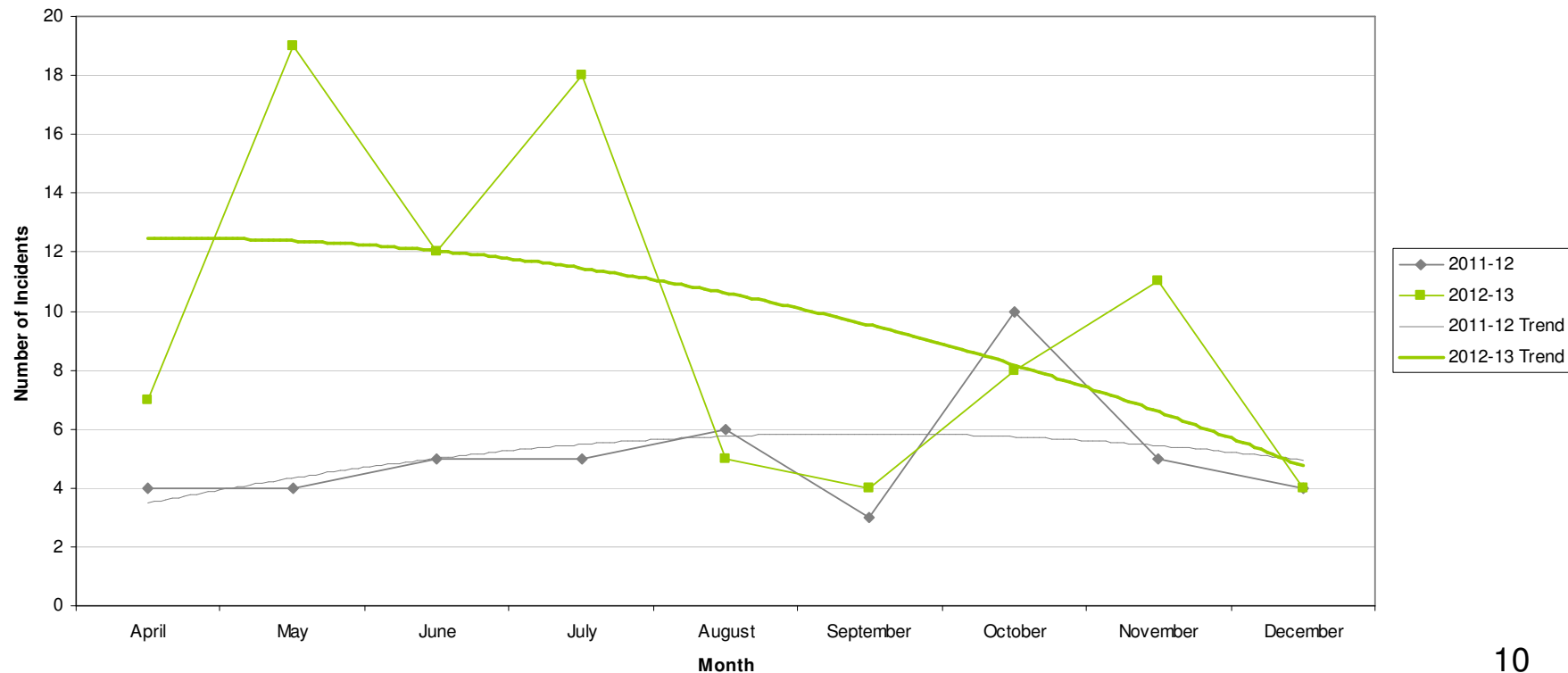


# Graffiti Reports

<b>RED</b>		
<b>AMBER</b>	<b>4 incidents</b>	<b>No change</b>
<b>GREEN</b>		

- All data refers to a comparison with the previous year's month
- It is proposed that performance over time graphs be used for each indicator
- Historic data for comparison is not available for dog fouling

Incidents of Graffiti

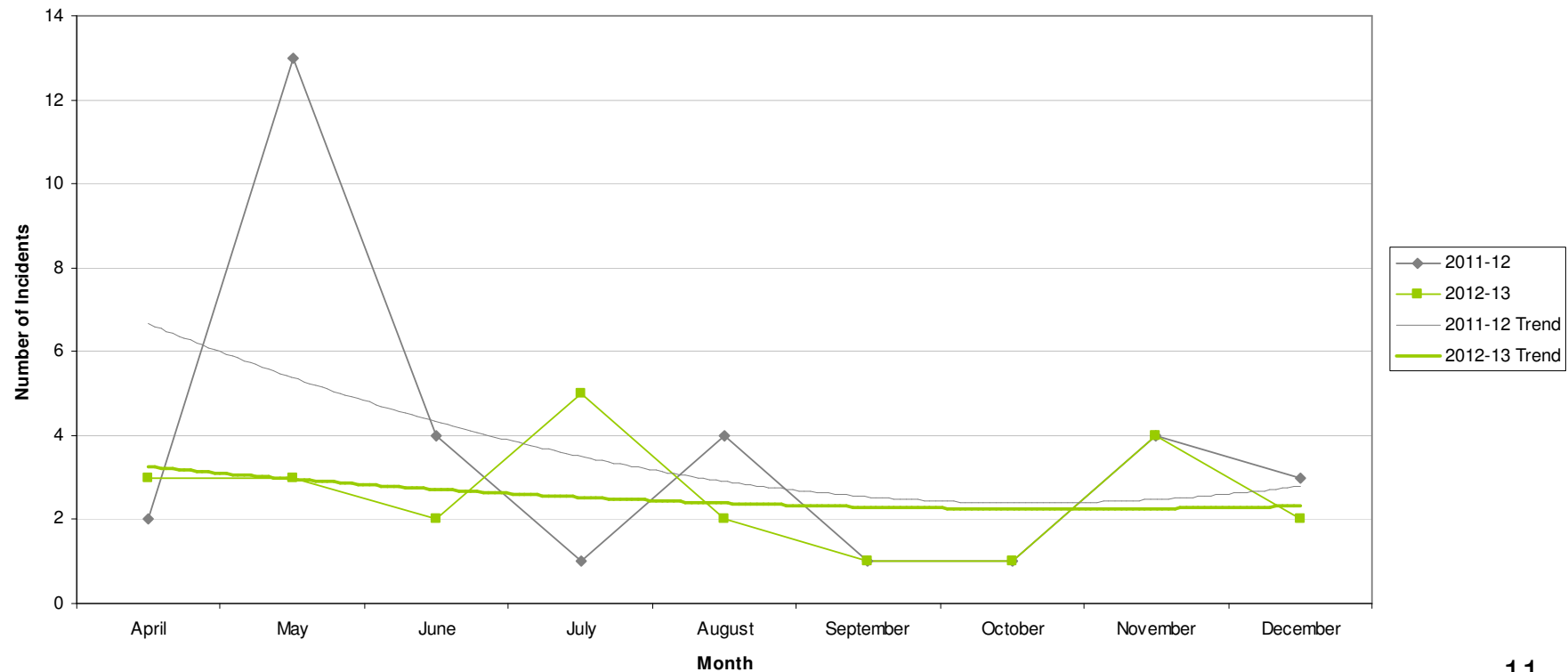


# Fly Tipping

<b>RED</b>		
<b>AMBER</b>		
<b>GREEN</b>	<b>2 incidents</b>	<b>Decrease of 1</b>

- All data refers to a comparison with the previous year's month
- It is proposed that performance over time graphs be used for each indicator
- Historic data for comparison is not available for dog fouling

Incidents of Fly Tipping



# Unemployment Rate

Area	Nov-12			Change in last		Change in last year	
	Number	Rate	City Rank	Number	%	Number	%
Berridge	1,030	7.1	7	-11	-1.1	67	7
Dunkirk and Lenton	253	2.3	19	-7	-2.7	-20	-7.3
Radford and Park	754	4	17	-14	-1.8	-13	-1.7
Sherwood	544	5.1	13	2	0.4	-66	-10.8
Wollaton East and Lenton Abbey	143	1.4	20	4	2.9	5	3.6
Wollaton West	248	2.7	18	-6	-2.4	10	4.2
Aspley	1,174	10.4	1	34	3	-13	-1.1
Basford	728	6.5	10	21	3	36	5.2
Bestwood	1,009	8.9	3	22	2.2	19	1.9
Bilborough	750	7.2	6	5	0.7	-25	-3.2
Bulwell	1,061	9.7	2	44	4.3	34	3.3
Bulwell Forest	410	4.5	15	-19	-4.4	-45	-9.9
Leen Valley	335	4.8	14	-18	-5.1	-11	-3.2
Bridge	696	6.6	9	-11	-1.6	-24	-3.3
Clifton North	378	4.3	16	-9	-2.3	-23	-5.7
Clifton South	524	6	12	17	3.4	11	2.1
Dales	863	7.4	5	-1	-0.1	22	2.6
Mapperley	703	6.3	11	1	0.1	-3	-0.4
St Ann's	1,195	8.7	4	-39	-3.2	8	0.7

*This is an edited version of a report produced by: Geoff Oxendale, Information and Research Officer, Nottingham City Council*

# Housing

## Wollaton West Ward - Housing



### Anti-social behaviour - Aspley (Wollaton West Ward)

Indicator	Current Target	2010/11	2011/12	2012/13		
		Value	Value	Value	Status	Trend
% of ASB cases resolved - Aspley	97.6%	94.14%	95.85%	99.16%		
% of ASB cases resolved by first intervention - Aspley	75%	-	-	87.18%		n/a

### Empty properties - Wollaton West Ward

Indicator	Current Target	2010/11	2011/12	2012/13		
		Value	Value	Value	Status	Trend
Average void re-let time for Wollaton West Ward	26	57.44	18	66.6		
Lettable voids Wollaton West Ward	-	3	3	4		
Empty properties awaiting decommission in Wollaton West Ward	-	0	0	0		

### Estate star ratings (from Tenant Service Inspectors)



Indicator	2010/11		2011/12		2012/13		
	Value	Status	Value	Status	Value	Status	Trend
Estate star rating - Wollaton	3 Star		3 Star		3 Star		

Data prepared by Nottingham City Homes Performance Team







For more information please contact Tricia Quinn, Performance Review Manager on 0115 9157365 or Marcus Parton, Performance Review Officer 0115 915715

# Housing

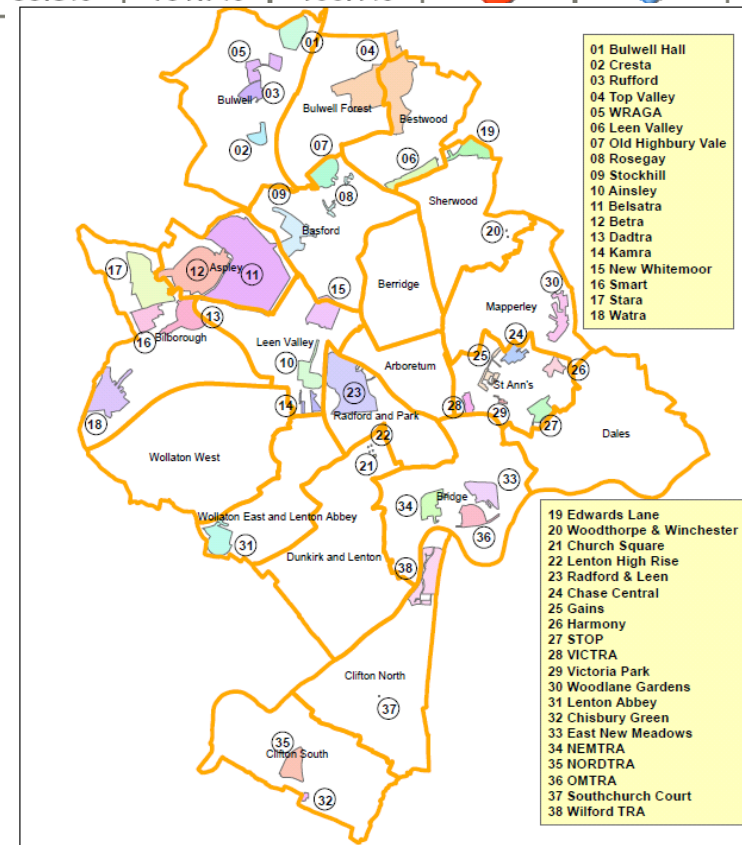
## Rent Collection - Aspley

Indicator	Current Target	2010/11	2011/12	2012/13		
		Value	Value	Value	Status	Trend
Rent charged that has been collected - Aspley	100.2%	99.8%	101.7%	100.1%		

### Key:

-  Performance on or exceeding target
-  Performance below target
-  Data only performance indicator
-  Performance has improved compared to two years ago
-  Performance has deteriorated compared to two years ago
-  Performance unchanged

**Map of Tenants and Residents Associations by Ward**



Data prepared by Nottingham City Homes Performance Team

For more information please contact Tricia Quinn, Performance Review Manager on 0115 9157365 or Marcus Parton, Performance Review Officer 0115 915715

# Community Protection

In December 2012 in Wollaton West there was one court outcome: a caution.

*Data has been received from Community Protection and where postcodes have been listed these have been geo-coded and mapped to determine the Ward. All addresses relate to the address of the Perpetrator.*

*FPNs are not currently available at ward level.*

# Fire

Table: Fire Rate (per 1000 of population) by ward (previous 12 months)

Ward	All Fire		Property		Secondary		Rank
	Volume	Rate	Volume	Rate	Volume	Rate	
Arboretum	14	1.21	5	0.43	9	0.77	13
Aspley	68	3.90	13	0.75	55	3.16	2
Basford	62	3.84	12	0.74	50	3.10	3
Berridge	44	2.23	19	0.96	25	1.27	10
Bestwood	44	2.58	13	0.76	31	1.82	7
Bilborough	46	2.75	13	0.78	33	1.97	6
Bridge	37	3.63	6	0.59	31	3.04	4
Bulwell	91	5.51	25	1.51	66	4.00	1
Bulwell Forest	43	3.13	12	0.87	31	2.26	5
Clifton North	15	1.15	4	0.31	11	0.84	16
Clifton South	19	1.36	6	0.43	13	0.93	12
Dales	19	1.18	10	0.62	9	0.56	15
Dunkirk and Lenton	11	0.91	5	0.41	6	0.50	18
Leen Valley	25	2.30	3	0.28	22	2.02	9
Mapperley	16	1.06	8	0.53	8	0.53	17
Radford and Park	30	1.48	11	0.54	19	0.94	11
Sherwood	18	1.19	3	0.20	15	1.00	14
St. Ann's	31	2.40	9	0.70	22	1.70	8
Wollaton East and Lenton Abbey	8	0.69	1	0.09	7	0.61	19
Wollaton West	5	0.34	0	0.00	5	0.34	20
<b>Average Rate (of 20 Wards)</b>	<b>2.14</b>		<b>0.57</b>		<b>1.57</b>		

Key:

- Highest
- Second Highest
- Third Highest

Wollaton West ranks 20<sup>th</sup> out of the 20 wards for rate (per 1000 of population) of all intentional fire.

NB: Wards are ranked from 1 – 20 where 1 is the highest Rate and 20 is the lowest Rate.



# Methodology

Data has not been audited or verified and therefore must only be used as a reflection of crime.

Crime Data and ASB calls have been extracted from the Police systems and mapped to ascertain which Ward they occurred in.

Where possible the most recent data is used, although for some areas this may be a month further in arrears.

Discussions continue with other agencies regarding what further data can be included.